

LINC00052 Promotes Gastric Cancer Cell Proliferation and Metastasis via Activating the Wnt/ β -Catenin Signaling Pathway

Yuqiang Shan,¹ Rongchao Ying,¹ Zhong Jia, Wencheng Kong, Yi Wu, Sixin Zheng, and Huicheng Jin

Department of General Surgery, Hangzhou First People's Hospital, Hangzhou, P.R. China

Gastric cancer (GC) is one of the most common malignant tumors of the digestive system. The etiology of GC is complex, and much more attention should be paid to genetic factors. In this study, we explored the role and function of LINC00052 in GC. We applied qRT-PCR and Northern blot to detect the expression of LINC00052 and found it was highly expressed during GC. We also investigated the effects of LINC00052 on tumor prognosis and progression and found that LINC00052 indicated poor prognosis and tumor progression. By performing MTT, colony formation, and Transwell assays, we found that LINC00052 promoted MGC-803 cell proliferation and metastasis. Pull-down and RIP assays showed that LINC00052 could interact with β -catenin and methyltransferase SMYD2, and immunoprecipitation detection showed that LINC00052 promoted β -catenin methylation to maintain its stability, so as to activate the Wnt/ β -catenin pathway. Furthermore, XAV939 (inhibitor of β -catenin) was used to treat MGC-803 cells, and we found that LINC00052 promoted proliferation and metastasis, possibly by activation of the Wnt/ β -catenin pathway. In conclusion, our research demonstrated a carcinogenic role for LINC00052 in GC, which may represent a new approach for the prevention and therapy of this cancer.

Key words: Gastric cancer (GC); LINC00052; Cell proliferation; Cell metastasis; Wnt/ β -catenin pathway

INTRODUCTION

Gastric cancer (GC) is one of the most common malignant tumors of the digestive system worldwide. It has also been confirmed as the third leading cause of cancer-related mortality¹⁻³. The occurrence of GC has definite connections with chronic gastritis, gastric polyps, and ulcers as well as dietary, environmental, and genetic factors⁴⁻⁷. Despite a number of chemotherapeutic compounds that have been used against this disease, the molecular mechanisms for occurrence and progression of GC remain unclear^{8,9}. Therefore, more effort is still needed to reveal the mechanism of GC, which may be helpful for the development of GC treatment.

Long noncoding RNAs (lncRNAs) are segments of noncoding RNA that are more than 200 nucleotides in length¹⁰. They have been discovered in recent years, and genome-wide transcriptomic studies have shown that at least 80% of mammalian genome transcription is exclusively associated with lncRNAs¹¹. Moreover, the dysregulation of lncRNAs appears to be a primary feature in

many complex human diseases, including GC^{10,12}. Long intergenic non-protein-coding RNA 52 (LINC00052) is a kind of lncRNA that is highly involved in cancer cell invasion and migration¹³. A study by Salameh et al. reported that overexpression of LINC00052 promoted breast cancer cell growth in vitro and in vivo¹⁴. However, the role and function of LINC00052 in GC have not been reported.

In this study, we found that LINC00052 was highly expressed in GC tissue and LINC00052 was associated with poor prognosis and tumor progression. MTT, colony formation, and Transwell assays were performed to detect the effects of LINC00052 on the regulation of GC cell proliferation and metastasis. Next, the interactions between LINC00052, SMYD2, and β -catenin were explored by RIP assay and Northern blotting to reveal the underlying mechanism(s) by which LINC00052 impacts GC cells. These results, for the first time, indicate the functional role of LINC00052 in GC. This study provides a new perspective for the diagnosis and treatment of this cancer.

¹These authors provided equal contribution to this work.

Address correspondence to Yuqiang Shan, Department of General Surgery, Hangzhou First People's Hospital, No. 261 Huansha Road, Hangzhou 310006, P.R. China. E-mail: shanyuqiang333@126.com or Huicheng Jin, Department of General Surgery, Hangzhou First People's Hospital, No. 261 Huansha Road, Hangzhou 310006, P.R. China. E-mail: jinhuicheng123@126.com

MATERIALS AND METHODS

Cell Culture

Human GC cell lines MGC-803, BGC-823, MKN-45, AGS, and SGC-7901, and the human gastric mucosal epithelial cell line GES-1 were all purchased from the Cell Bank of Shanghai Institute of Cell Biology (Shanghai, P.R. China). They were cultured in Roswell Park Memorial Institute (RPMI-1640) culture medium (HyClone, Irvine, CA, USA) with 10% fetal bovine serum (FBS; HyClone) and maintained at 37°C in 5% CO₂ and passaged at 80%–90% confluency every 3 or 4 days¹⁵.

MGC-803 cells were pretreated with 5 µmol/L of LLY-507 (inhibitor of SMYD; Sigma-Aldrich, St. Louis, MO, USA) or 10 µmol/L of XAV939 (inhibitor of β-catenin; Sigma-Aldrich) for 1 h and then cultured as before for detection of inhibitor effects.

Transfection and Stable Cell Line Construction

The LINC00052 overexpression construct was generated by subcloning the polymerase chain reaction (PCR)-amplified full-length human LINC00052 coding sequence into pcDNA3.1 (Sangon Biotech, Shanghai, P.R. China). The empty vector was transfected into cells as its negative control. The specific LINC00052-targeted siRNA (RiboBio, Guangzhou, P.R. China) was employed for LINC00052 downregulation. The scrambled siRNA was used as its negative control. For alteration of SMYD2 expression, PCR-amplified full-length SMYD2 was subcloned into pcDNA3.1 (Sangon Biotech) and used as SMYD2-expressing vector. SMYD2-targeted siRNA was purchased from Santa Cruz Biotechnology (Santa Cruz, CA, USA). Lipofectamine 2000 (Invitrogen, Carlsbad, CA, USA) was used for all transfections according to the manufacturer's protocol. Stable cell lines expressing LINC00052 or siLINC00052 were selected after 3–4 weeks by treating 200 mg/ml G418 (Sigma-Aldrich).

Clinical Tissue Samples

A total of 50 GC patients (25 males and 25 females, between 39 and 63 years old, mean age: 47.2±8.3 years) who received surgical resection in Hangzhou First People's Hospital were enrolled in this study from April 2009 to October 2016. Fifty fresh GC samples were collected from these volunteers during surgical resection. Meanwhile, 50 normal gastric tissue samples from gastric ulcer surgery were collected. Tissue samples were immediately frozen in liquid nitrogen and kept at –80°C until total RNA was extracted. All patients were primarily diagnosed without any chemo-, radio-, or biological treatment before surgery. After surgery, follow-up by reexamination or phone call was performed on each patient after 80 months, and the survival of patients was recorded. This study was approved by the ethical committee of Hangzhou First People's Hospital, and written

informed consent was obtained from each volunteer for the use of their gastric tissue samples.

MTT Assay

Cell viability was measured using a 3-(4,5-dimethylthiazol-2-yl)-2,5-diphenyl-2H-tetrazolium bromide (MTT) colorimetric assay according to standard methods described previously. In brief, the transfected cells were planted into 96-well plates at a density of 2×10³ cells/well for adherence. After 48 h of incubation at 37°C, 20 µl of MTT solution (0.5 mg/ml; Sigma-Aldrich) was added and incubated for 4 h at 37°C. Dimethyl sulfoxide (DMSO; 150 µl; Sigma-Aldrich) was added, and the absorbance at 570 nm was measured by a microplate reader (Bio-Rad Laboratories, Hercules, CA, USA).

qRT-PCR

Total RNA was isolated from GC cell lines and GC tissue samples using TRIzol reagent (Invitrogen) and treated with DNaseI (Promega, Madison, WI, USA). Reverse transcription was performed using the Multiscribe RT Kit (Applied Biosystems, Foster City, CA, USA) and random hexamers or oligo(dT). qRT-PCR was performed by 10 ng of cDNA, 5 µl of SYBR Green PCR Master Mix (Applied Biosystems), and 200 nM of each gene-specific primer. ABI Prism 7000 Sequence Detection System (PE Applied Biosystems) was employed for qRT-PCR.

Western Blot

The protein used for Western blotting was extracted using RIA lysis buffer (Beyotime Biotechnology, Shanghai, P.R. China) supplemented with protease inhibitors (Roche, Basel, Switzerland). The proteins were quantified using the BCA™ Protein Assay Kit (Pierce, Appleton, WI, USA). The Western blot system was established using a Bio-Rad Bis-Tris Gel system according to the manufacturer's instructions. Primary antibodies were prepared in 5% blocking buffer at a dilution of 1:1,000. The primary antibody was incubated with the membrane at 4°C overnight, followed by washing and incubation with the secondary antibody marked by horseradish peroxidase for 1 h at room temperature. After rinsing, the polyvinylidene difluoride (PVDF) membrane carried blots, and antibodies were transferred into the Bio-Rad ChemiDoc™ XRS system, and then 200 µl of Immobilon Western Chemiluminescent HRP Substrate (Millipore, Boston, MA, USA) was added to cover the membrane surface. The signals were captured, and the intensity of the bands was quantified using Image Lab™ Software (Bio-Rad, Shanghai, P.R. China).

Colony Formation Assays

All cell lines used in this research were seeded into six-well plates with 100 cells and a final volume of 2 ml culture medium per well. The cells were maintained at

37°C in 5% CO₂, and the culture medium was changed every 4 days for the following 3 weeks. The colony formation cells of each group were stained with hematoxylin and eosin (H&E) in the end¹⁵.

Migration and Invasion Assays

The cell migration assay was done in 24-well Transwell plates. The stable cells and the corresponding negative control cells were seeded into the upper chamber of the Transwell system (8.0-mm pore size; Millipore, Boston, MA, USA) with 1×10^4 cells/well in 100 μ l of serum-free RPMI-1640 medium, and the lower chamber was filled with 600 μ l of RPMI-1640 culture medium containing 30% FBS. After 48 h of incubation, cells remaining on the top layers of the inserts were removed by cotton swab scrubbing, and cells on the lower surface of the membrane were fixed and stained with H&E staining. The cell numbers in five random fields (200 \times) were counted for each chamber, and the average value was calculated¹⁵. The invasion assay was performed in the same way as described for the migration assay, except that the inserts were precoated with Matrigel (Becton-Dickinson Labware, Bedford, MA, USA).

Northern Blot

Total RNA was extracted by TRIzol reagent (Invitrogen) for Northern blot. The lncRNA and GAPDH fragments were cloned into pCDNA4 plasmid (Sangon Biotech), and Northern probes were produced using Biotin RNA Labeling Mix (Roche). T7 RNA polymerase (Roche) was used for in vitro transcription. The samples were separated by electrophoresis using formaldehyde gel, followed by membrane transfer. The membranes were then incubated with hydration buffer supplemented with the proper number of probes, and the nucleic acid signal was tested by Chemiluminescent Nucleic Acid Detection Module (Thermo Scientific, Waltham, MA, USA)¹⁶.

Immunoprecipitation (IP)

Cells were lysed in HEPES lysate buffer (20 mM HEPES, pH 7.4, 10 mM sodium fluoride, 0.5 mM sodium orthovanadate, 60 nM Okadaic acid, 100 mM sodium chloride, 1% Triton X-100, 0.5 μ g/ml aprotinin, 0.5 μ g/ml leupeptin, 0.83 mM benzamidine, and 0.23 mM phenylmethylsulfonyl fluoride) for 10 min at 4°C for collection cellular lysates. Thereafter, cellular lysates were centrifuged at 16,100 \times g at 4°C for 30 min, and the supernatant was collected and incubated with antibodies coupled to protein A or G Sepharose (Sigma-Aldrich) for 4 h at 4°C. Beads were subsequently washed three times with HEPES lysates buffer and analyzed by Western blotting.

Pull-Down Assay

Cell lysates were prepared in the same way as described above and were incubated with GST or GST

fusion proteins coupled to glutathione Sepharose for 4 h at 4°C. The samples were subsequently washed and prepared for Western blot as described for IP.

RIP Assay

The cells were treated for 30 min with 1% formaldehyde and the crashed with RIPA buffer (150 mM NaCl, 0.5% sodium deoxycholate, 0.1% SDS, 1% NP-40, 1 mM EDTA, and 50 mM Tris, pH 8.0) supplemented with RNase inhibitors and proteinase inhibitors (Roche). The supernatants obtained by centrifugation were incubated with the indicated antibodies for 4 h, and then protein A/G beads were added. The precipitates were washed with RIPA buffer followed by de-cross-linking. Finally, RNA was extracted, and LINC00052 enrichment was examined using RT-PCR¹⁶.

Statistical Analysis

The results of multiple experiments are presented as the mean \pm SD. Statistical analyses were performed using SPSS 19.0 statistical software. Overall survival was estimated using Kaplan–Meier and log-rank test method. Significant differences of all other experiments were calculated using a one-way analysis of variance (ANOVA). A value of $p < 0.05$ was considered to indicate a statistically significant result.

RESULTS

LINC00052 Was Highly Expressed During GC

In this study, qRT-PCR was performed to detect the expression of LINC00052 in GC cell lines, including MGC-803, BGC-823, MKN-45, AGS, and SGC-7901, as well as in the normal gastric mucosa epithelial GES-1 cells. LINC00052 was highly expressed in GC cells when compared with GES-1 cells ($p < 0.01$ or $p < 0.001$) (Fig. 1A). Next, Northern blot assay was applied to test LINC00052 expression of four pairs of normal and GC tissues. LINC00052 was highly expressed in GC tissues when compared with normal tissues (Fig. 1B). To further investigate and compare the expression of LINC00052 in GC tissues and normal tissues, qRT-PCR was performed to detect the LINC00052 expression of 50 pairs of GC and normal tissues. We found that LINC00052 was also highly expressed in tumor tissues when compared to the normal group ($p < 0.001$) (Fig. 1C). We then calculated the qRT-PCR detection value of tumor/normal ratio to intuitionistic showing the relative LINC00052 expression level (Fig. 1D). The graph clearly illustrates that LINC00052 was highly expressed during GC.

LINC00052 Expression Was Associated With Poor Survival Rate of Patients With GC

We next tested the expression level of LINC00052 in different TNM stages (stages I, II, III, and IV). The

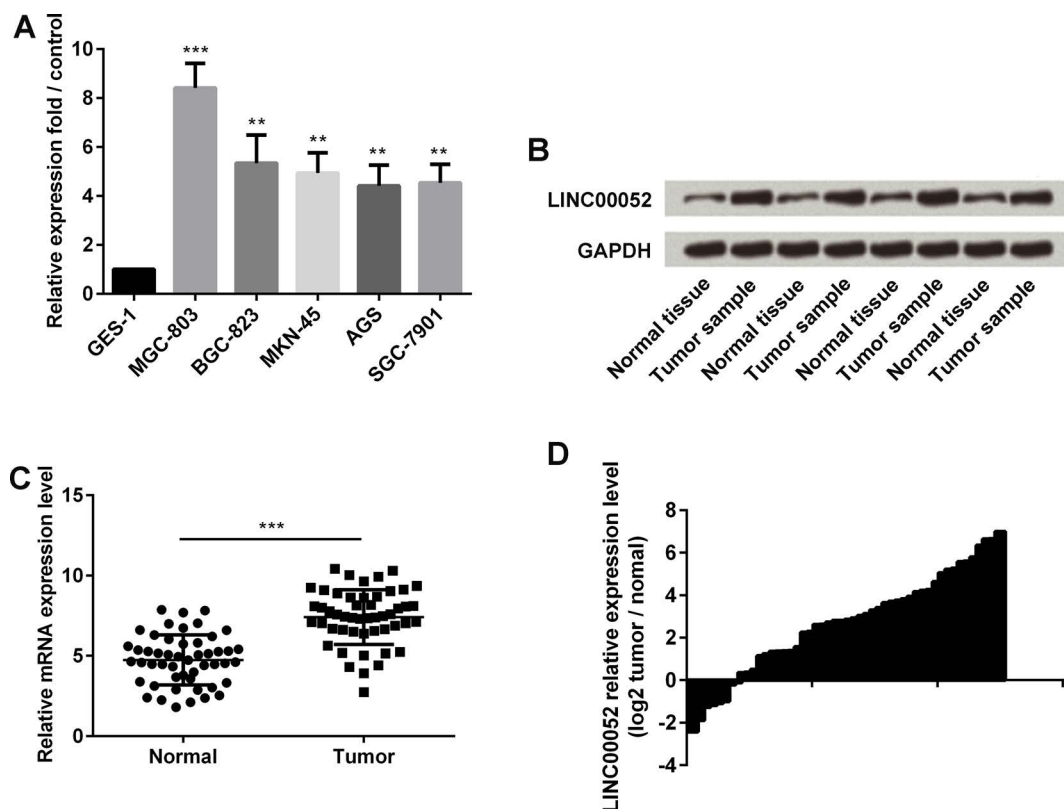


Figure 1. Expression of long intergenic non-protein-coding RNA 52 (LINC00052) during gastric cancer (GC). (A) The expression of LINC00052 in GC and normal cell lines was detected by qRT-PCR. (B) The expression of LINC00052 in four pairs of GC and normal tissues was detected by Northern blot assay. (C) The expression of LINC00052 in gastric tissue samples from 50 GC patients and 50 gastric ulcer patients was monitored by qRT-PCR. (D) Relative LINC00052 expression level by Tumor/Normal ratio. ** $p < 0.01$; *** $p < 0.001$.

level of LINC00052 increased stage by stage ($p < 0.01$ or $p < 0.001$) (Fig. 2A). The overall and disease-free survival rates in both the low LINC00052 and high LINC00052 expression groups were, respectively, tested by Kaplan–Meier survival analysis, and the log-rank was highly significant ($p = 0.026$ and $p = 0.025$) (Fig. 2B and C). High expression of LINC00052 presented a low survival rate compared with the low LINC00052 expression group. Finally, we isolated GC tissue samples from low and high LINC00052 expression groups, and the proliferation- and metastasis-associated protein expressions were then detected. The Western blot results showed that E-cadherin and p21 were expressed in low amounts, while MMP2, MMP9, and cyclin D1 were all expressed in high amounts in the high-LINC00052 expression group when compared to the low-expression group (Fig. 2D).

LINC00052 Silencing Inhibited GC Cell Proliferation and Metastasis

In the following work, MGC-803 cells were used for investigating the functional role of LINC00052 in GC cells in vitro. The expression of LINC00052 was silenced by transfection with its specific siRNA, and

LINC00052 was successfully knocked down ($p < 0.001$) (Fig. 3A). The MTT assay was then performed to investigate the viability of MGC-803 cells after LINC00052 was silenced. LINC00052 silencing significantly suppressed MGC-803 cell viability ($p < 0.05$ or $p < 0.01$) (Fig. 3B). Moreover, results from the clone formation assay showed that LINC00052 silencing inhibited MGC-803 cell clone formation ($p < 0.001$) (Fig. 3C). Results from the Transwell assay showed that LINC00052 silencing inhibited MGC-803 cell migration and invasion ($p < 0.001$) (Fig. 3D and E). Western blot detection indicated that E-cadherin and p21 were upregulated, while MMP2, MMP9, and cyclin D1 were downregulated after the expression of LINC00052 was knocked down (Fig. 3F).

Overexpression of LINC00052 Promoted GC Cell Proliferation and Metastasis

The expression of LINC00052 in MGC-803 cells was overexpressed, and the functional effects of LINC00052 overexpression were then detected. Expression of LINC00052 was significantly overexpressed after transfection with LINC00052-expressing vector ($p < 0.01$) (Fig. 4A).

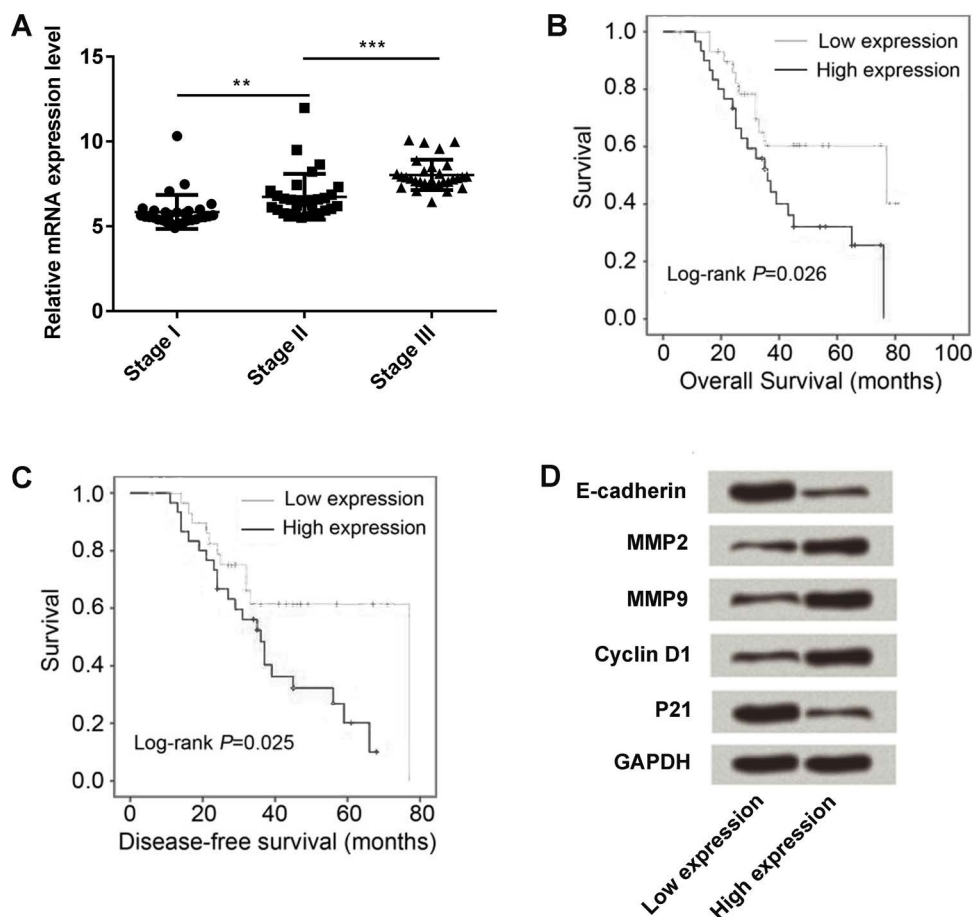


Figure 2. Connection of LINC00052 expression with the progression and survival of GC patients. (A) LINC00052 expression was detected by qRT-PCR in GC patients with different TNM stages (stages I, II, III, and IV). (B) Overall survival and (C) disease-free survival were recorded after surgery by performing follow-up 80 months after surgery with reexamination or phone calls, and these two survival rates were estimated using the Kaplan–Meier and log-rank test methods. (D) The expression of proliferation- and migration-associated protein expressions was monitored in the tissues of high- or low-LINC00052 expression patients. ** $p < 0.01$; *** $p < 0.001$.

Overexpression of LINC00052 significantly improved cell viability and colony formation ($p < 0.05$, $p < 0.01$, or $p < 0.001$) (Fig. 4B and C). In addition, LINC00052 overexpression significantly increased the number of cells that migrated and invaded ($p < 0.01$ or $p < 0.001$) (Fig. 4D and E). Western blot analysis results showed that E-cadherin and p21 were downregulated, and MMP2, MMP9, and cyclin D1 were upregulated after LINC00052 was overexpressed (Fig. 4F). These data revealed that LINC00052 overexpression resulted in completely contrary results to LINC00052 silencing, which further confirmed the anti-proliferative and antimetastasing role for LINC00052 silencing in GC cells.

LINC00052 Promoted β -Catenin Methylation to Maintain its Stability, so as to Activate the Wnt/ β -Catenin Pathway

The Wnt/ β -catenin pathway is well known for regulating cell proliferation and migration, and its aberrant

activation is involved in gastric carcinogenesis and progression¹⁷. We detected the relationship between LINC00052 expression and the Wnt/ β -catenin pathway in order to reveal the underlying mechanism(s) by which LINC00052 impacts GC cells. Results from pull-down and RIP assays showed that LINC00052 could interact with β -catenin and methyltransferase SMYD2 ($p < 0.001$) (Fig. 5A and B). Results from IP detection showed that LINC00052 silencing blocked the interaction between SMYD2 and β -catenin, while overexpression of LINC00052 promoted this interaction (Fig. 5C). The inhibitor of SMYD2 (LLY-507) then inhibited β -catenin methylation, indicating SMYD2 methylated β -catenin (Fig. 5D). Recombinant protein methylation reaction in vitro further confirmed that LINC00052 promoted β -catenin methylation by SMYD2 (Fig. 5E). Overexpression of SMYD2 promoted β -catenin methylation and maintained protein stability, while SMYD2 silencing inhibited β -catenin methylation and promoted protein degradation (per Western

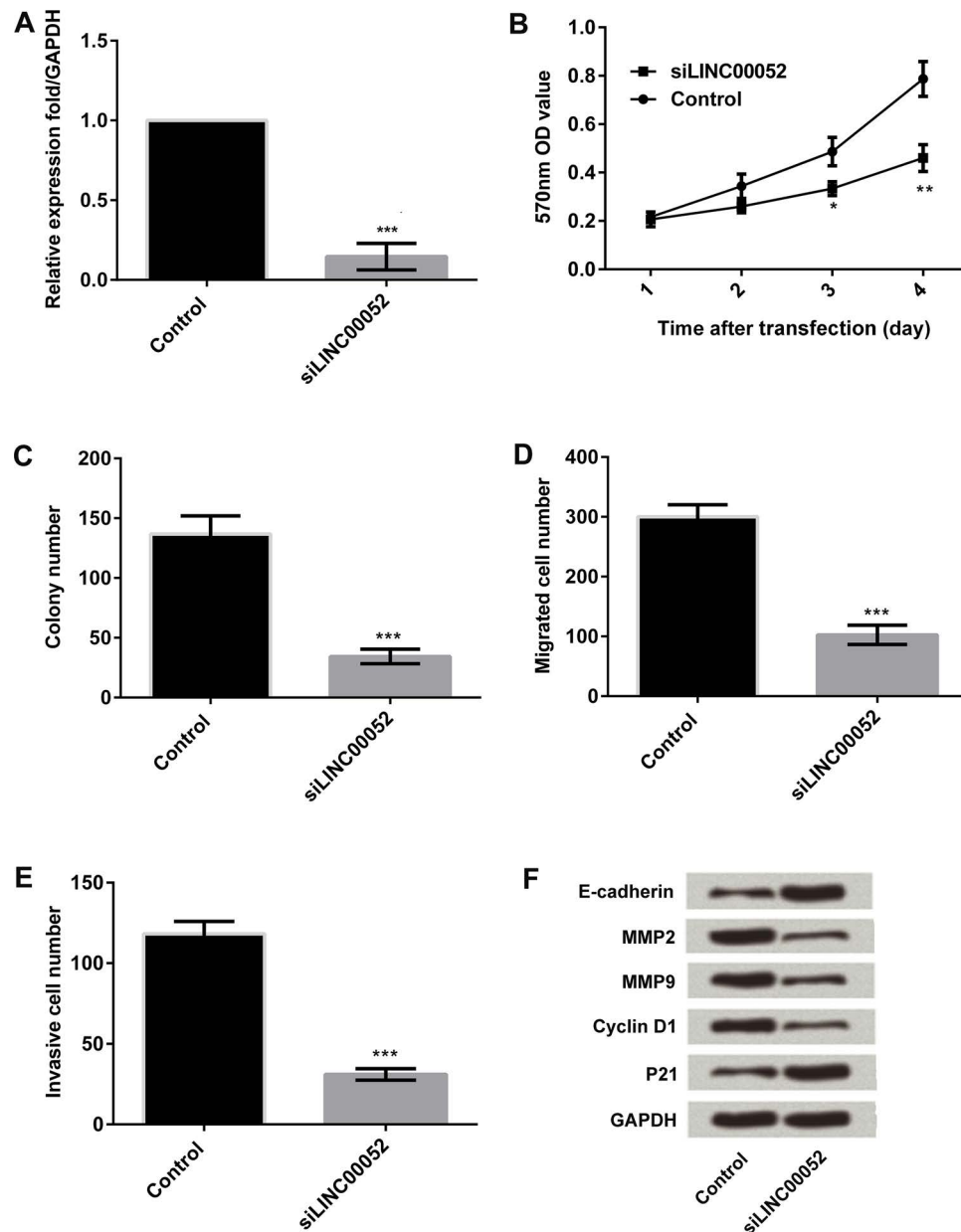


Figure 3. Effect of LINC00052 silencing on MGC-803 cell proliferation and metastasis. MGC-803 cells were transfected with LINC00052-targeted siRNA or its negative control. Thereafter, (A) the expression of LINC00052 in transfected cells was detected by qRT-PCR. (B) Cell viability was measured by MTT assay. (C) Cell clone formation was detected by clone formation assay. The numbers of (D) migrated cells (E) and invasive cells were measured by Transwell assay. (F) The expression of proliferation- and migration-associated protein expressions was monitored by Western blotting. * $p < 0.05$; ** $p < 0.01$; *** $p < 0.001$.

blot) (Fig. 5F). LINC00052 silencing inhibited β -catenin methylation, and overexpression of LINC00052 promoted β -catenin methylation (Fig. 5G). LINC00052 silencing resulted in β -catenin instability, while overexpression of LINC00052 stabilized β -catenin, indicating that LINC00052 maintained the stability of β -catenin by promoting β -catenin methylation (Fig. 5H). In addition, we found that LINC00052 silencing inhibited β -catenin

nuclear import, while overexpression of LINC00052 promoted β -catenin nuclear import (Fig. 5I). The detection of target gene expression of the Wnt pathway in LINC00052 silencing and overexpressing cells showed that LINC00052 activated Wnt and thus promoted the target gene expression (Fig. 5J). Finally, the expression of SMYD2 and β -catenin methylation in GC and normal tissues were detected and compared. We found that they

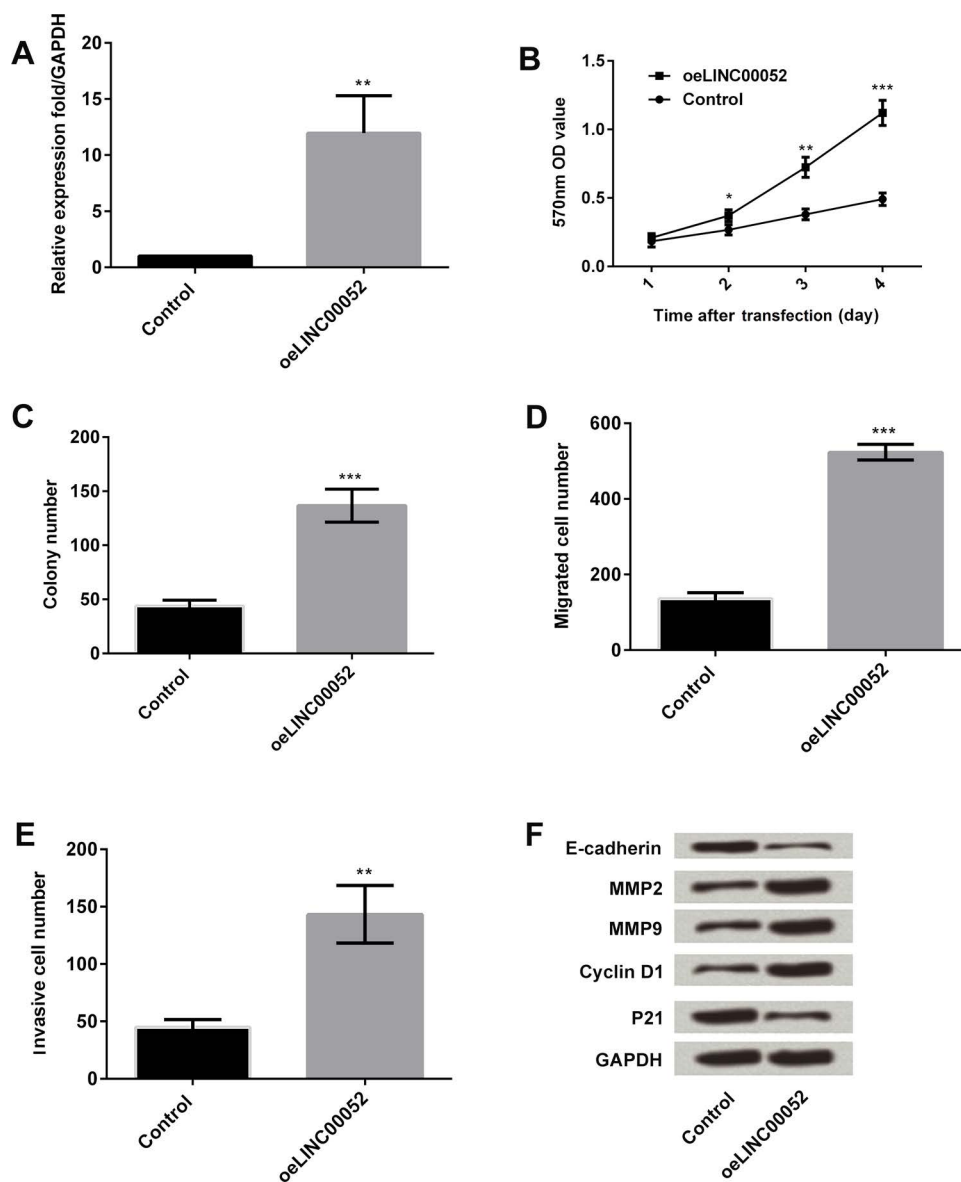


Figure 4. Effect of LINC00052 overexpression on MGC-803 cell proliferation and metastasis. MGC-803 cells were transfected with LINC00052-expressing vector or its negative control. Thereafter, (A) the expression of LINC00052 in the transfected cells was assessed by qRT-PCR. (B) Cell viability was detected by MTT. (C) Cell clone formation was detected by colony formation assay. The numbers of (D) migrated cells and (E) invasive cells were measured by Transwell assay. (F) The expression of proliferation- and migration-associated protein was monitored by Western blot assay. * $p < 0.05$; ** $p < 0.01$; *** $p < 0.001$.

were both expressed at higher levels in tumor samples than in normal tissues (Fig. 5K).

Overexpression of LINC00052 Promoted GC Cell Proliferation and Metastasis via the Wnt/ β -Catenin Pathway

To further confirm the importance of the Wnt/ β -catenin pathway in LINC00052-mediated GC cells, an inhibitor of β -catenin (XAV939) was used to treat MGC-803 cells. We found that XAV939 strengthened the antiproliferative and

antimetastasing effects of LINC00052 silencing on GC cells, as evidenced by the decrease in the number of cells that migrated and invaded ($p < 0.05$), as well as upregulations of E-cadherin and p21, and downregulations of MMP2, MMP9, and cyclin D1 (Fig. 6A–C). As expected, XAV939 significantly abolished LINC00052-induced increases in cell migration ($p < 0.001$) and invasion ($p < 0.01$), as well as LINC00052-induced abnormal expressions of proliferation- and metastasis-associated proteins (E-cadherin, p21, MMP2, MMP9, and cyclin D1) (Fig. 6D–F).

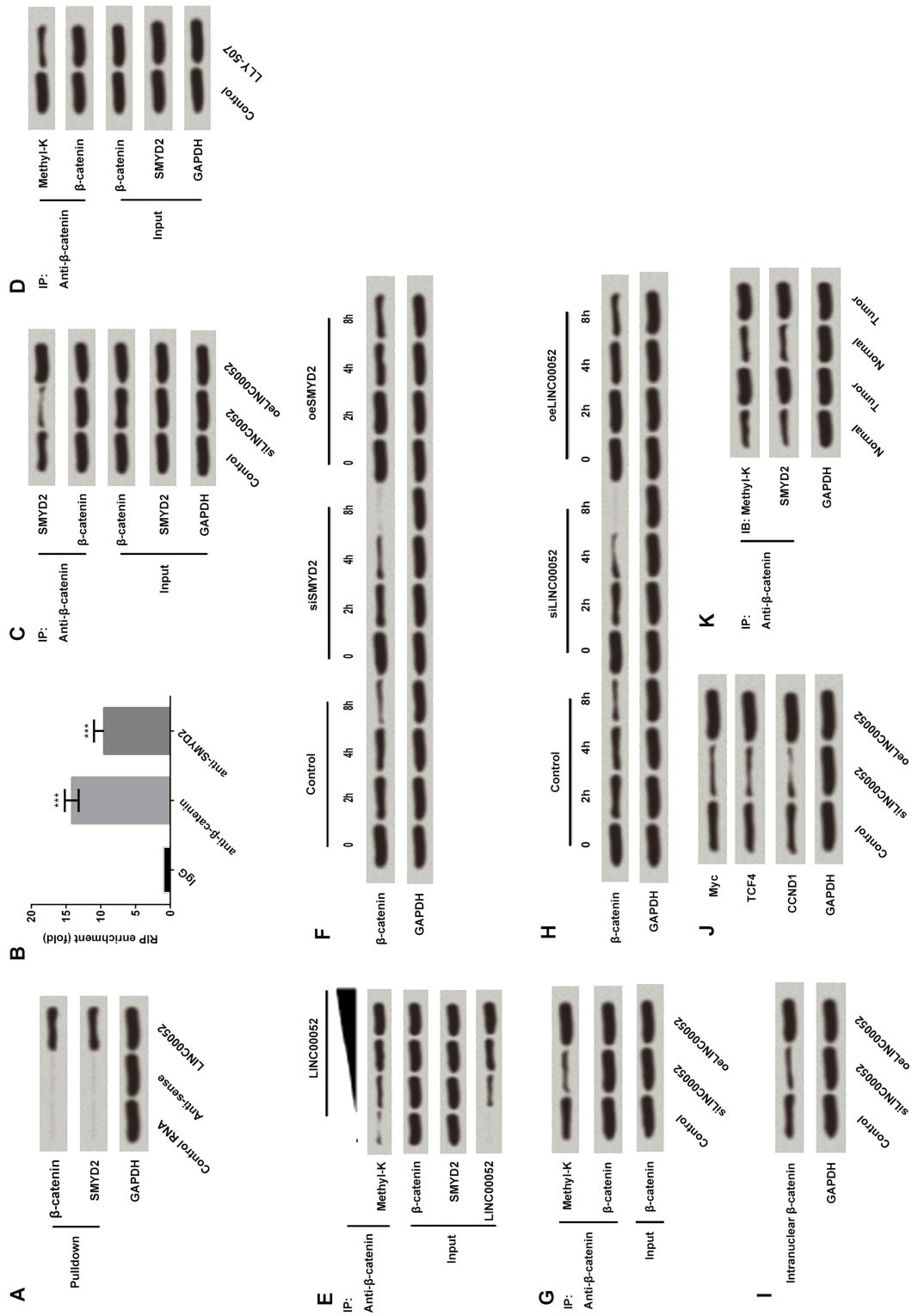


Figure 5. Effect of LINC00052 on the Wnt/ β -catenin signaling pathway-related factors. (A) The interaction between LINC00052 and β -catenin or methyltransferase SMYD2 was detected by pull-down assay. (B) RIP assay further confirmed the interactions of LINC00052 with β -catenin and SMYD2. (C) The interaction between SMYD2 and β -catenin in LINC00052-overexpressing and -silencing cells was detected by immunoprecipitation (IP) analysis. (D) LLY-507, an inhibitor of SMYD2, was used to treat MGC-803 cells, and thus β -catenin methylation was detected. (E) Recombinant protein methylation reaction was performed to reveal the role of LINC00052 in SMYD2-induced β -catenin methylation. (F) β -Catenin expression was detected in SMYD2-overexpressing and -silencing cells. (G) β -Catenin methylation in LINC00052-overexpressing and -silencing cells. (H) β -Catenin expression was detected in LINC00052-overexpressing and -silencing cells. (I) β -Catenin nuclear import in LINC00052-overexpressing and -silencing cells was assessed. (J) The expression of Wnt target proteins in LINC00052-overexpressing and -silencing cells. (K) SMYD2 and β -catenin methylation level testing in GC and normal samples. *** $p < 0.001$.

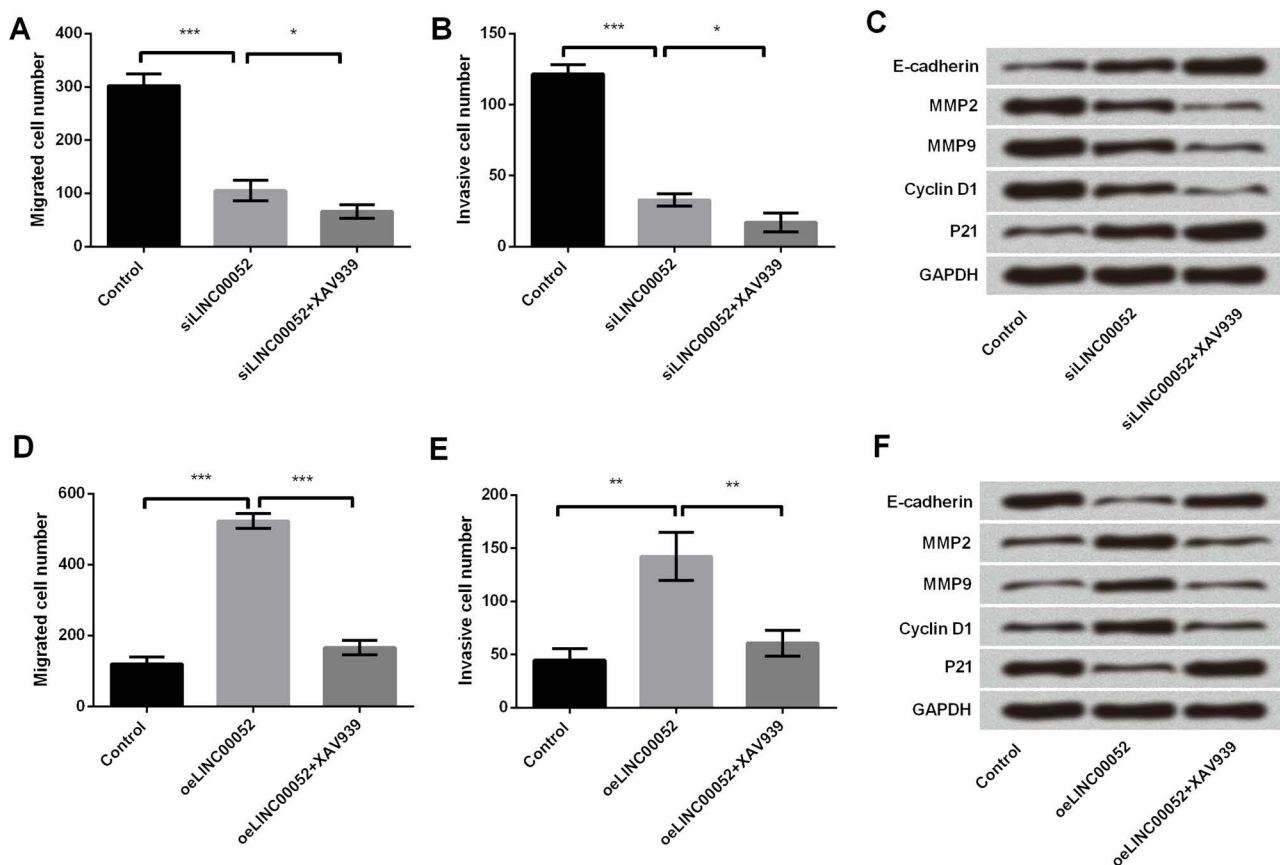


Figure 6. Effect of the Wnt/ β -catenin pathway blocking on LINC00052-mediated MGC-803 cells. MGC-803 cells were transfected with LINC00052-targeted siRNA and treated with or without XAV939 (inhibitor of β -catenin). Thereafter, the numbers of (A) migrated cells (B) and invasive cells as well as (C) the expressions of proliferation- and migration-associated proteins were, respectively, assessed by Transwell and Western blotting analyses. MGC-803 cells were transfected with LINC00052-expressing vector and treated with or without XAV939. (D) Migrated cells, (E) invasive cells, and (F) proliferation- and migration-associated protein expression were assessed again. * $p < 0.05$; ** $p < 0.01$; *** $p < 0.001$.

DISCUSSION

In this study, we demonstrated that LINC00052 was highly expressed in GC cell lines, including MGC-803, BGC-823, MKN-45, AGS, and SGC-7901, and in tumor tissues when compared with their normal controls. High expression of LINC00052 had a positive correlation with TNM stages and a negative correlation with overall survival. Overexpression of LINC00052 promoted MGC-803 cell proliferation and metastasis, while LINC00052 silencing affected proliferation and metastasis, resulting in a completely opposite impact. Further investigation revealed that LINC00052 could interact with β -catenin and methyltransferase SMYD2, and LINC00052 promoted β -catenin methylation to maintain its stability, so as to activate the Wnt/ β -catenin pathway. LINC00052 promoted proliferation and metastasis possibly via activation of the Wnt/ β -catenin pathway.

Recently, lncRNAs have emerged as important regulators of a variety of human diseases, including cancer¹⁸⁻²⁰.

In addition, several GC-associated lncRNAs have been characterized, such as ZFAS1²¹, HOTAIR²², and MEG3²³. Specifically, ZFAS1 and HOTAIR were highly expressed in GC, and increased levels were associated with a poor prognosis and a shorter survival^{21,22}. In contrast, the MEG3 level was markedly decreased in GC tissues compared with their adjacent normal tissues, while a low level of MEG3 expression had a relatively poor prognosis²³. In the current study, for the first time, we revealed that LINC00052 was also a GC-associated lncRNA. We discovered that LINC00052 was highly expressed in GC cell lines and tissue samples, and its high expression was closely associated with TNM stages and survival in GC patients.

In addition, lncRNAs have been reported to play an important role in the tumorigenesis of GC by controlling cell growth and metastasis²⁴. In the study of Qi et al., AGAP2-AS1 promoted GC cell proliferation and invasion, implying its carcinogenic role in GC²⁵. The research of Huang et al. proved that LINC00673 exerted

an oncogenic function that promoted GC development and progression²⁶. Our findings demonstrated that over-expression of LINC00052 resulted in the promotion of GC cell proliferation and metastasis, implying that LINC00052 acted as an oncogene in GC. Actually, limited studies have focused on the role of LINC00052 in cancers. A recent study reported that the expression of LINC00052 was correlated with the occurrence of triple negative breast cancer¹⁰. In addition, gene silencing of LINC00052 diminished HER3 expression and reduced breast cancer cell growth in vitro and in vivo¹⁴. In another report, LINC00052 showed the ability to inhibit proliferation, invasion, and migration of hepatocarcinoma cells¹³. However, to our knowledge, our study provides the first evidence that LINC00052 might be a potential target for GC therapy.

It is well documented that the Wnt/ β -catenin pathway participates in a wide variety of cellular process, such as cell growth, cell cycle, differentiation, and tumorigenesis²⁷. Recent evidence indicates that the Wnt/ β -catenin pathway serves as a good biomolecular target for GC treatment²⁸. β -Catenin protein is activated by Wnt signaling and prevails in different types of signal transduction²⁹. β -Catenin normally forms a stable complex with the cell adhesion molecules of the cadherin family, which are involved in the formation of adherens junctions³⁰. Free β -catenin can then enter the nucleus, where it activates the transcription of Wnt downstream target genes, including cyclin D1, c-Myc, and MMPs^{31,32}. In the current study, we found that LINC00052 could interact with β -catenin and SMYD2 and promoted β -catenin methylation. SMYD2 is a catalytic SET domain containing protein methyltransferase reported to monomethylate lysine residues on histone and nonhistone proteins³³. These data indicate that LINC00052 mediated GC cell proliferation and metastasis, possibly by promoting β -catenin methylation to maintain its stability, and thus activation of the Wnt/ β -catenin signaling pathway.

To sum up, this study demonstrates a carcinogenic role for LINC00052 in GC by promoting cell proliferation and metastasis. LINC00052 could maintain the stability of β -catenin and thus promote activation of the Wnt/ β -catenin pathway. This study provides helpful information in understanding the initiation and development mechanisms of GC and suggests that LINC00052 may have a potentially diagnostic and therapeutic value for GC in the future.

REFERENCES

1. Yu B, Chen X, Li J, Gu Q, Zhu Z, Li C, Su L, Liu B. MicroRNA-29c inhibits cell proliferation by targeting NASP in human gastric cancer. *BMC Cancer* 2017;17(1):109.
2. Arora N, Alsaied O, Dauer P, Majumder K, Modi S, Giri B, Dudeja V, Banerjee S, Von Hoff D, Saluja A. Downregulation of Sp1 by Minnelide leads to decrease in HSP70 and decrease in tumor burden of gastric cancer. *PLoS One* 2017;12(2):e0171827.
3. Yamamoto M, Rashid OM, Wong J. Surgical management of gastric cancer: The East vs. West perspective. *J Gastrointest Oncol.* 2015;6(1):79–88.
4. Kiso M, Yoshihara M, Ito M, Inoue K, Kato K, Nakajima S, Mabe K, Kobayashi M, Uemura N, Yada T, Oka M, Kawai T, Boda T, Kotachi T, Masuda K, Tanaka S, Chayama K. Characteristics of gastric cancer in negative test of serum anti-Helicobacter pylori antibody and pepsinogen test: A multi-center study. *Gastric Cancer* 2016. [Epub ahead of print]
5. Yoshida T, Kato J, Inoue I, Yoshimura N, Deguchi H, Mukoubayashi C, Oka M, Watanabe M, Enomoto S, Niwa T, Maekita T, Iguchi M, Tamai H, Utsunomiya H, Yamamichi N, Fujishiro M, Iwane M, Takeshita T, Ushijima T, Ichinose M. Cancer development based on chronic active gastritis and resulting gastric atrophy as assessed by serum levels of pepsinogen and Helicobacter pylori antibody titer. *Int J Cancer* 2014;134(6):1445–57.
6. Mohammadian Amiri R, Tehrani M, Taghizadeh S, Shokri-Shirvani J, Fakheri H, Ajami A. Association of nucleotide-binding oligomerization domain receptors with peptic ulcer and gastric cancer. *Iran J Allergy Asthma Immunol.* 2016; 15(5):355–62.
7. Park YM, Kim JH, Baik SJ, Park JJ, Youn YH, Park H. Clinical risk assessment for gastric cancer in asymptomatic population after a health check-up: An individualized consideration of the risk factors. *Medicine (Baltimore)* 2016; 95(44):e5351.
8. Jia L, Ren S, Li T, Wu J, Zhou X, Zhang Y, Wu J, Liu W. Effects of combined simultaneous and sequential endostar and cisplatin treatment in a mice model of gastric cancer peritoneal metastases. *Gastroenterol Res Pract.* 2017;2017: 2920384.
9. Wu Z, Liu B, Zheng X, Hou H, Li Y. Role of the PEBP4 protein in the development and metastasis of gastric cancer. *Oncotarget* 2017;8(11):18177–84.
10. Lv M, Xu P, Wu Y, Huang L, Li W, Lv S, Wu X, Zeng X, Shen R, Jia X, Yin Y, Gu Y, Yuan H, Xie H, Fu Z. LncRNAs as new biomarkers to differentiate triple negative breast cancer from non-triple negative breast cancer. *Oncotarget* 2016;7(11):13047–59.
11. Kapranov P, Cheng J, Dike S, Nix DA, Dutttagupta R, Willingham AT, Stadler PF, Hertel J, Hackermuller J, Hofacker IL, Bell I, Cheung E, Drenkow J, Dumais E, Patel S, Helt G, Ganesh M, Ghosh S, Piccolboni A, Sementchenko V, Tammana H, Gingeras TR. RNA maps reveal new RNA classes and a possible function for pervasive transcription. *Science* 2007;316(5830):1484–8.
12. Tian J, Hu X, Gao W, Zhang J, Chen M, Zhang X, Ma J, Yuan H. Identification of the long noncoding RNA LET as a novel tumor suppressor in gastric cancer. *Mol Med Rep.* 2017;15(4):2229–34.
13. Xiong D, Sheng Y, Ding S, Chen J, Tan X, Zeng T, Qin D, Zhu L, Huang A, Tang H. LINC00052 regulates the expression of NTRK3 by miR-128 and miR-485-3p to strengthen HCC cells invasion and migration. *Oncotarget* 2016;7(30): 47593–608.
14. Salameh A, Fan X, Choi BK, Zhang S, Zhang N, An Z. HER3 and LINC00052 interplay promotes tumor growth in breast cancer. *Oncotarget* 2017;8(4):6526–39.
15. He X, Liu Z, Xia Y, Xu J, Lv G, Wang L, Ma T, Jiang L, Mou Y, Jiang X, Ma J, Zhao Z, Ni H, Xu W, Ru G, Huang D, Tao H. HOXB7 overexpression promotes cell proliferation and

- correlates with poor prognosis in gastric cancer patients by inducing expression of both AKT and MARKs. *Oncotarget* 2017;8(1):1247–61.
16. Chen ZZ, Huang L, Wu YH, Zhai WJ, Zhu PP, Gao YF. LncSox4 promotes the self-renewal of liver tumour-initiating cells through Stat3-mediated Sox4 expression. *Nat Commun*. 2016;7:12598.
 17. Ooi CH, Ivanova T, Wu J, Lee M, Tan IB, Tao J, Ward L, Koo JH, Gopalakrishnan V, Zhu Y. Oncogenic pathway combinations predict clinical prognosis in gastric cancer. *PLoS Genet*. 2009;5(10):e1000676.
 18. Jin Y, Cui Z, Li X, Jin X, Peng J. Upregulation of long non-coding RNA PlncRNA-1 promotes proliferation and induces epithelial-mesenchymal transition in prostate cancer. *Oncotarget* 2017;8(16):26090–9.
 19. Sookoian S, Rohr C, Salatino A, Dopazo H, Gianotti TF, Castano GO, Pirola CJ. Genetic variation in long noncoding RNAs and the risk of nonalcoholic fatty liver disease. *Oncotarget* 2017;8(14):22917–26.
 20. Schmitt AM, Chang HY. Long noncoding RNAs: At the intersection of cancer and chromatin biology. *Cold Spring Harb Perspect Med*. 2017;7(7).
 21. Nie F, Yu X, Huang M, Wang Y, Xie M, Ma H, Wang Z, De W, Sun M. Long noncoding RNA ZFAS1 promotes gastric cancer cells proliferation by epigenetically repressing KLF2 and NKD2 expression. *Oncotarget* 2017;8(24):38227–38.
 22. Liu XH, Sun M, Nie FQ, Ge YB, Zhang EB, Yin DD, Kong R, Xia R, Lu KH, Li JH, De W, Wang KM, Wang ZX. Lnc RNA HOTAIR functions as a competing endogenous RNA to regulate HER2 expression by sponging miR-331-3p in gastric cancer. *Mol Cancer* 2014;13:92.
 23. Sun M, Xia R, Jin F, Xu T, Liu Z, De W, Liu X. Down-regulated long noncoding RNA MEG3 is associated with poor prognosis and promotes cell proliferation in gastric cancer. *Tumour Biol*. 2014;35(2):1065–73.
 24. Sun D, Li X, He Y, Li W, Wang Y, Wang H, Jiang S, Xin Y. YAP1 enhances cell proliferation, migration, and invasion of gastric cancer in vitro and in vivo. *Oncotarget* 2016;7(49):81062–76.
 25. Qi F, Liu X, Wu H, Yu X, Wei C, Huang X, Ji G, Nie F, Wang K. Long noncoding AGAP2-AS1 is activated by SP1 and promotes cell proliferation and invasion in gastric cancer. *J Hematol Oncol*. 2017;10(1):48.
 26. Huang M, Hou J, Wang Y, Xie M, Wei C, Nie F, Wang Z, Sun M. Long noncoding RNA LINC00673 is activated by SP1 and exerts oncogenic properties by interacting with LSD1 and EZH2 in gastric cancer. *Mol Ther*. 2017;25(4):1014–26.
 27. Clevers H, Nusse R. Wnt/beta-catenin signaling and disease. *Cell* 2012;149(6):1192–205.
 28. Zheng R, Deng Q, Liu Y, Zhao P. Curcumin inhibits gastric carcinoma cell growth and induces apoptosis by suppressing the Wnt/beta-catenin signaling pathway. *Med Sci Monit*. 2017;23:163–71.
 29. Giles RH, van Es JH, Clevers H. Caught up in a Wnt storm: Wnt signaling in cancer. *Biochim Biophys Acta* 2003;1653(1):1–24.
 30. Chang TS, Wei KL, Lu CK, Chen YH, Cheng YT, Tung SY, Wu CS, Chiang MK. Inhibition of CCAR1, a coactivator of beta-catenin, suppresses the proliferation and migration of gastric cancer cells. *Int J Mol Sci*. 2017;18(2).
 31. Behrens J, von Kries JP, Kuhl M, Bruhn L, Wedlich D, Grosschedl R, Birchmeier W. Functional interaction of beta-catenin with the transcription factor LEF-1. *Nature* 1996;382(6592):638–42.
 32. Molenaar M, van de Wetering M, Oosterwegel M, Peterson-Maduro J, Godsave S, Korinek V, Roose J, Destree O, Clevers H. XTcf-3 transcription factor mediates beta-catenin-induced axis formation in *Xenopus* embryos. *Cell* 1996;86(3):391–9.
 33. Zhang X, Huang Y, Shi X. Emerging roles of lysine methylation on non-histone proteins. *Cell Mol Life Sci*. 2015;72(22):4257–72.