



ARTICLE

Impact of Coronary Artery Curvature on the Longitudinal Stent Foreshortening: Real-World Observations

Yang Li^{1, #}, Runxin Fang^{2, #}, Renyun Wang¹, Qiming Dai¹, Zhiyong Li^{2, *} and Genshan Ma¹

¹Department of Cardiology, Zhongda Hospital, School of Medicine, Southeast University, Nanjing, 210009, China

²School of Biological Science and Medical Engineering, Southeast University, Nanjing, 210096, China

*Corresponding Author: Zhiyong Li. Email: zylicam@gmail.com

#These authors contributed equally to this work

Received: 15 May 2021 Accepted: 21 June 2021

ABSTRACT

Longitudinal stent foreshortening is a known phenomenon, however, the impact of coronary artery curvature on longitudinal stent foreshortening remains unclear. The aim of this study is to determine the impact of coronary artery curvature on the longitudinal stent foreshortening in the real-world scenarios. A total of 86 consecutive patients underwent coronary stent implantation were included in the present study. The degree of coronary artery curvature was defined as the length of the coronary artery curvature divided by the straight length. Longitudinal stent foreshortening was defined as the stent length after implantation divided by the stent length before implantation. The mean longitudinal foreshortening rate of coronary stents was about 94% in curved coronary arteries. Longitudinal stent foreshortening rate was positively correlated with the degree of coronary artery curvature ($r = -0.86$, $P < 0.01$). Coronary artery curvature is associated with significant longitudinal foreshortening of coronary stents, thus longitudinal foreshortening should be considered on deciding the stent length in curved coronary artery and a longer stent is usually needed in curved coronary artery.

KEYWORDS

Stent foreshortening; coronary artery curvature; coronary stent

1 Introduction

Coronary artery stents are widely used in interventional treatment of coronary heart disease [1–3], the length of the stent should be as long as possible to cover the lesion with stenosis more than 30% [4]. Coronary stent foreshortening is one of the biomechanical stent characteristics, bench test showed that foreshortening was low and usually ranged from -0.34% to 1.29% [5]. Coronary artery tortuosity increases the difficulty of stent implantation [6], coronary artery anatomy might have potential impact on stent shape, including foreshortening after implantation. The aim of the present study is to evaluate the impact of coronary artery curvature on the longitudinal stent foreshortening in the real-world scenarios.



2 Methods

2.1 Patient Population

A total of 86 consecutive patients underwent coronary stent implantation in our department from January 2020 to December 2020 were included in the present study. The study was approved by ethic committee of Zhongda Hospital, Southeast University. All enrolled patients signed informed consent.

2.2 Coronary Angiography

Coronary artery curvature and longitudinal stent foreshortening was evaluated on special angulations, LAD was assessed in right anterior oblique with cranial angulations and LCX in right anterior oblique with caudal angulations, while RCA in left anterior oblique. Quantitative coronary angiography was used to measure the length of the coronary artery and coronary stent. The degree of coronary artery curvature was defined as the length of the coronary artery curvature divided by the straight length (Fig. 1). Longitudinal stent foreshortening was defined as the stent length after implantation divided by the stent length before implantation.

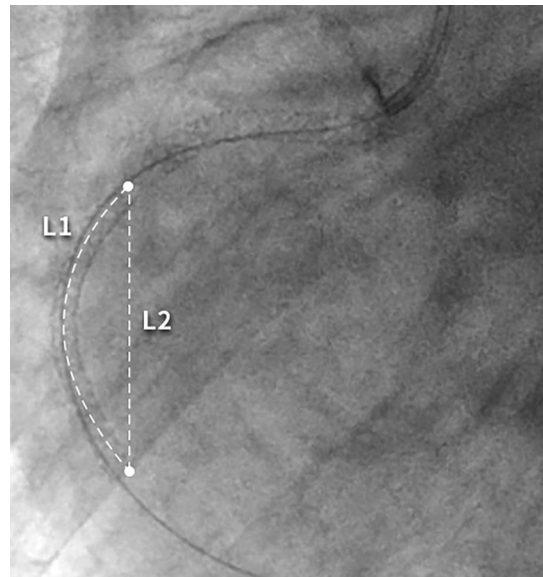


Figure 1: The definition of the degree of coronary artery curvature is $L1/L2$. L1: the length of the coronary artery curvature L2: the straight length

2.3 Statistical Analysis

The data were analyzed using SPSS (IBM, Version 26). Continuous variables were expressed as mean \pm standard deviation. Correlation analysis was performed to determine the association between coronary artery curvature and longitudinal stent foreshortening. P values < 0.05 were considered significant.

3 Result

A total of 86 implanted stents were selected. The diameter of the implanted coronary stent was 2.5–3.5 mm and the length was 23–36 mm. The mean degree of coronary artery curvature was 1.06 ± 0.04 (range from 1.02–1.18), while mean longitudinal stent foreshortening rate was 0.94 ± 0.02 (range from 0.90–1.0). Longitudinal stent foreshortening rate was positively correlated with the degree of coronary artery curvature ($r = -0.86$, $P < 0.01$) (Fig. 2).

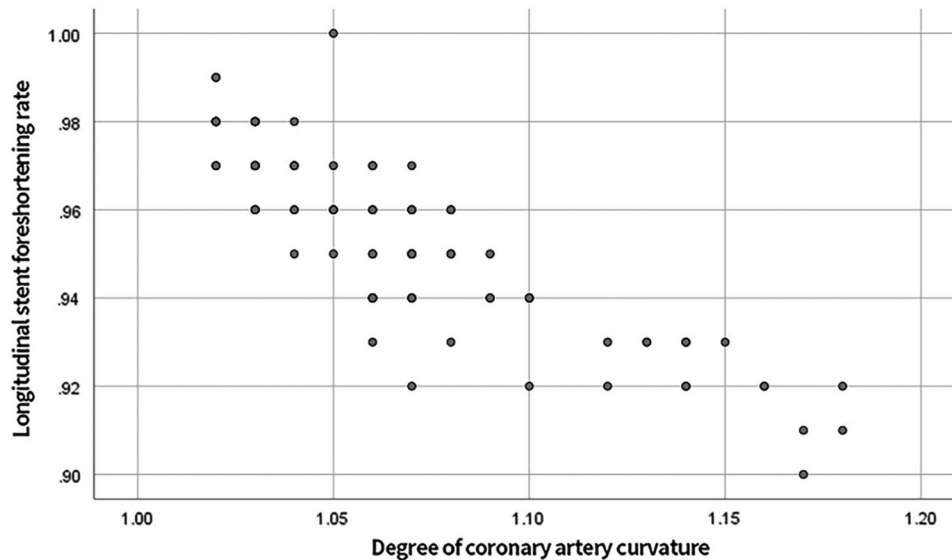


Figure 2: Scatter plot of the degree of coronary artery curvature and the longitudinal stent foreshortening

4 Discussion

Recoil, foreshortening, and dogboning are important design parameters which influence the crimping and expansion characteristics of a stent [7]. Foreshortening of the coronary stent was the percentage change in stent length assessed after stent implantation [5]. Successful stenting should cover coronary lesion with more than 30% stenosis [8]. The longitudinal foreshortening of the stent is directly related to the precise positioning of the stent in the coronary lesion location. Low shortening rate belongs to the essential feature of coronary stents. The influence of coronary artery curvature on the stent foreshortening in the real-world scenarios is still unknown now.

Present study found that the stent foreshortening rate could increase to about 90% in case of severe curvature. Bench test showed that the foreshortening of stents tested is quiet small and less than 1.29% [5], but in the present study we found that the foreshortening of stents were significantly increased, the reason might be considered to be related to the structure of curved blood vessels. A previous case report also demonstrated longitudinal stent foreshortening of a contemporary coronary nitinol stent [9]. Foreshortening might be a potential limitation of stent design that may predispose the stented vessel to a higher risk of neointimal hyperplasia [10], but it might also occur in case of coronary artery curvature as shown in this report. The improved mechanical properties, behaviors, and design parameters of stent may reduce the possibility of longitudinal stent foreshortening, and subsequent restenosis risk induced by the foreshortening or the dogboning [11]. In case of stent implantation in case of coronary artery curvature, stent with less physical longitudinal stent foreshortening features should be considered and the stent length should be long enough to cover the lesion plus calculated longitudinal stent foreshortening.

Limitation: The length of the stent was measured by quantitative coronary angiography in our study, intravascular ultrasound might be a better choice for more accurate measurement of the stent length.

In conclusion, the curvature of the coronary artery can increase the longitudinal shortening of the coronary stent in real-world scenarios, so the length of the stent selected in the curved coronary artery should be appropriately increased accordingly.

Funding Statement: This research was partially supported by National Natural Science Foundation of China (NSFC) under Grant No. 81300159.

Conflicts of Interest: The authors declare that they have no conflicts of interest to report regarding the present study.

References

1. Serruys, P. W., Kutryk, M. J., Ong, A. T. (2006). Coronary-artery stents. *New England Journal of Medicine*, 354(5), 483–495.
2. Shang, S., Guo, X., Zhang, Y. (2020). Impact of regional collaborative network of chest pain centers on the rescue timeline and prognosis of patient with ST-segment elevation myocardial infarction. *Chinese Journal of Interventional Cardiology*, 28(1), 26–30.
3. Yi, T., Wu, Z., Fan, F., Feng, S., Li, J. et al. (2020). The current situation and related factors of chest pain center construction in county medical institutions of China. *Chinese Journal of Interventional Cardiology*, 28(6), 310–315.
4. Colombo, A., Stankovic, G., Moses, J. W. (2002). Selection of coronary stents. *Journal of the American College of Cardiology*, 40(6), 1021–1033.
5. Bonin, M., Guerin, P., Olive, J. M., Jordana, F., Huchet, F. (2018). Standardized bench test evaluation of coronary stents: Biomechanical characteristics. *Catheterization and Cardiovascular Interventions*, 92(7), E465–E470.
6. Saeed, B., Banerjee, S., Brilakis, E. S. (2008). Percutaneous coronary intervention in tortuous coronary arteries: Associated complications and strategies to improve success. *Journal of Interventional Cardiology*, 21(6), 504–511.
7. Kumar, A., Bhatnagar, N. (2021). Finite element simulation and testing of cobalt-chromium stent: A parametric study on radial strength, recoil, foreshortening, and dogboning. *Computer Methods in Biomechanics and Biomedical Engineering*, 24, 245–259.
8. He, Y., Song, M., Wu, F., Feng, J., Qian, D. (2020). Application of buddy balloon technique in accurate of stent placement during percutaneous coronary intervention. *Chinese Journal of Interventional Cardiology*, 28(8), 451–454.
9. Yew, K. L. (2016). Longitudinal stent foreshortening of Stentys Xposition S self-apposing stents and its impact on overlapping stenting strategy. *International Journal of Cardiology*, 204, 187–188.
10. Ladisa, J. F., Jr., Olson, L. E., Hettrick, D. A., Warltier, D. C., Kersten, J. R. et al. (2005). Axial stent strut angle influences wall shear stress after stent implantation: Analysis using 3D computational fluid dynamics models of stent foreshortening. *Biomedical Engineering Online*, 4, 59.
11. Lim, D., Cho, S. K., Park, W. P., Kristensson, A., Ko, J. Y. et al. (2008). Suggestion of potential stent design parameters to reduce restenosis risk driven by foreshortening or dogboning due to non-uniform balloon-stent expansion. *Annals of Biomedical Engineering*, 36(7), 1118–1129.